

Primordial Planets Explain Interstellar Dust, the Formation of Life, and Falsify Dark Energy

Carl H. Gibson^{a*}, N. Chandra Wickramasinghe^b and Rudolph E. Schild^c

^aUCSD Depts. MAE and SIO, La Jolla, CA, 92093-0411, USA

^bCardiff Univ., Cardiff; Director, Buckingham Centre for Astrobiology, UK

^cHarvard Center for Astrophysics, Cambridge, MA, USA

ABSTRACT

Hydrogravitational-dynamics (HGD) cosmology of Gibson/Schild 1996 predicts proto-globular-star-cluster clumps of Earth-mass planets fragmented from plasma at 300 Kyr. Stars promptly formed from mergers of these gas planets, and chemicals C, N, O, Fe etc. were created by the stars and their supernovae. Seeded gas planets reduced the oxides to hot water oceans. Water oceans at critical temperature 647 K then hosted the first organic chemistry and the first life, distributed to the 10^{80} planets of the cosmological big bang by comets produced by the new (HGD) planet-merger star formation mechanism. This biological big bang began at 2 Myr when liquid oceans condensed. Life distributed by Hoyle/Wickramasinghe cometary panspermia evolved in a cosmological primordial soup of the merging planets throughout the universe. A primordial astrophysical basis is provided for astrobiology by HGD cosmology. Concordance Λ CDMHC cosmology is rendered obsolete by the observation of complex life on Earth, falsifying the dark energy and cold dark matter concepts. The dark matter of galaxies is mostly primordial planets in protoglobularstarcluster clumps, 30,000,000 planets per star (not 8!). Complex organic chemicals of the interstellar dust is formed by life on these planets, and distributed by their comets.

Keywords: Cosmology, star formation, planet formation, astrobiology.

1. INTRODUCTION

When photons decouple from plasma 300,000 years after the big bang, the phase change triggered gravitational formation of Earth-mass gas planets in million-solar-mass clumps as predicted by Gibson (1996)¹ and observed independently by Schild (1996)². Plasma protogalaxies fragmented entirely into such clumps of planets, now frozen to form the dark matter of galaxies and the primary custodians of evolving life. A common assumption is that life originated, and is probably confined, to the planet Earth, and that life has no astrophysical significance. Neither assumption appears to be correct. Over many decades, Hoyle and Wickramasinghe (1977³, 1982⁴, 2000⁵) pioneered the concept that cometary-panspermia explains life on Earth, citing strong spectral evidence that polycyclic-aromatic-hydrocarbons PAH are biological in origin, and that the close morphological similarity between microfossils found in carbonaceous meteors with their terrestrial counterparts is proof of cosmic biological dispersal. Hydro-Gravitational-Dynamics HGD cosmology strongly supports cometary-panspermia as an active component of cosmic and biological evolution from the beginnings of the gas epoch soon after the big bang, Gibson, Schild & Wickramasinghe (2010)⁶ until today. Table 1 summarizes the timing of gravitational structure formations from HGD with the indicated time of formation of living organisms. The standard cosmological model leaves no

* Corresponding author: Depts. of MAE and SIO, CASS, cgibson@ucsd.edu, <http://sdcc3.ucsd.edu/~ir118>

possibility for the chemically complex life observed on Earth to form or be transmitted on cosmological scales. The first stars do not appear until after 400 million years of dark ages along with a handful of planets per star, not the 30 million per star expected from HGD.

Table 1. HGD structures formed in the plasma and gas epochs as a function of time after the big bang event. Because the universe is expanding, gravitational instability favors density minima. Structure formation is therefore by fragmentation as the minima form voids. Planets feed stars to supernovae masses, and produce interstellar dust by evaporating nearby planets that contain life.

Protosuperclusters and protosupercluster voids are formed under photon viscosity control	30,000 years (10^{12} s), plasma fragments at globular star cluster density, $\rho = 10^{-17}$ kg m ⁻³
Protogalaxies fragmented along vortex lines	300,000 years (10^{13} s), plasma to gas transition
Planets form in clumps, stars form and die from planet mergers, life begins	330,000 years (10^{13} s), hot hydrogen gas planets form water
Intelligent life \sim 2 Myr	\sim 13.7 Gyr (4×10^{17} s)
Interstellar Dust and Organic Chemical Processes \sim 2 Myr. Self-replicating, auto-catalytic, organic, living and evolving, chemicals are distributed widely on cosmic scales.	Organic chemistry begins and is optimized to form life as we see it on Earth in the hot water oceans of the primordial planets.

Cometary-panspermia CP and hydrogravitational dynamics HGD cosmology are complimentary concepts that must be merged to explain new observations from new space telescopes and improving ground based telescopes. Each of these concepts is needed to fully explain the other. Without HGD, CP has no life seeds to disperse and no means to disperse them beyond a few planets near a star if, against all odds, life should appear on one of these few planets. With HGD, cometary panspermia is an intrinsic part of star formation from planets and their fragments, and the formation and dispersion of life on cosmic scales, possibly intelligent life, occurs soon after the formation of the first chemicals and hot water oceans at about two million years.

2. THEORY

Suppose a large volume of fluid exists at rest with uniform density ρ . All the fluid within Hubble radius $L_H = ct$ will begin to move toward the origin $\mathbf{x} = 0$ for time $t > t_0$ if a non-acoustic mass perturbation of size $M' = +\delta\rho L^3$ is introduced at $t = t_0$, and all the fluid will begin to move away from the origin if $M' = -\delta\rho L^3$, where c is the speed of light and L is a radius smaller than the Jeans acoustic scale L_J but larger than the largest Schwarz scale L_{SXmax} (both defined below). It can be shown (Gibson 2000)⁷ that an isolated mass perturbation grows or decreases exponentially with time squared according to the expression

$$M'(t) = |M'(t_0)| \exp [\pm 2\pi\rho Gt^2]$$

where the gravitational (free fall) time scale $\tau_g = (\rho G)^{-1/2}$. Nothing much happens at the origin before the free fall time τ_g arrives. For M' positive a sudden increase in density occurs near the “cannonball” origin as mass piles up. Hydrostatic equilibrium is established as local pressure increases to balance gravity. Density and temperature increase and hydrodynamic effects become relevant. For M' negative, density near the origin suddenly decreases and a void appears surrounding the “vacuum beachball” origin at time $\sim \tau_g$ and propagates radially outward as a rarefaction wave limited in speed by the speed of sound. Matter near the void falls radially away due to gravity. Thus, in an expanding universe, gravitational structure formation occurs mostly by fragmentation since the expansion of space favors void formation and resists condensation. Formation of voids in the plasma epoch account for the prominent sonic peak in the cosmic microwave background CMB temperature anisotropy spectrum, rather than acoustic oscillations of plasma that falls into gravitational potential wells of condensed CDM seeds, as assumed by the standard model.

The viscous Schwarz scale $L_{SV} = (\gamma\nu/\rho G)^{1/2}$ is the length scale at which viscous forces match gravitational forces, where γ is the rate-of-strain, ν is the kinematic viscosity of the fluid and G is Newton’s gravitational constant. The turbulent Schwarz scale $L_{ST} = \varepsilon^{1/2}/(\rho G)^{3/4}$, where ε is the viscous dissipation rate of turbulent kinetic energy. The diffusive Schwarz scale $L_{SD} = (D^2/\rho G)^{1/4}$, where D is the diffusivity of the fluid.

The Jeans acoustic scale $L_J = V_S\tau_g$. Only the Jeans (1902) criterion that gravitational structure formation cannot occur for scales $L < L_J$ is used in the standard cosmological model. This is its fatal flaw. Jeans neglected the effects of viscosity, turbulence and diffusivity. Because the scale of causal connection ($L_H = ct$) is smaller than the Jeans scale during the plasma epoch, no structure can form. Thus it was necessary to invent cold dark matter CDM; that is, a mythical substance with the property that its Jeans scale L_J is smaller than L_H because it is cold. The standard model assumes CDM is nearly collisionless, like neutrinos, which means its diffusivity D is very large so that its L_{SD} scale during the plasma epoch exceeds L_H . Thus, whatever CDM is, it cannot condense during the plasma epoch according to the hydrogravitational dynamics HGD Schwarz scale criteria (Gibson 2009a, b, 2010)^{8,9,10}.

3. STRUCTURE FORMATION IN THE EARLY UNIVERSE

Figure 1 illustrates schematically the differences between HGD cosmology and Λ CDMHC cosmology during the plasma epoch, soon after mass became the dominant cosmological component at time $\sim 10^{11}$ seconds after the big bang event over energy. From HGD, 97% of the mass at that time is non-baryonic, with the weakly collisional properties and mass of neutrinos (green). The rest (yellow) is hydrogen-helium plasma (protons, alpha particles and electrons). The total mass is slightly more than required for the universe to be flat, leading to an eventual big crunch. For Λ CDMHC the anti-gravity dark-energy density eventually dominates and accelerates the expansion of an open universe as the kinetic-energy and gravitational-potential energy densities approach zero.

In Fig. 1, CDM seeds (top left) cannot possibly condense because this non-baryonic dark matter NBDM (green) is nearly collisionless and therefore super diffusive. Neither can NBDM hierarchically cluster HC to form potential wells, into which the plasma (yellow) can fall and produce loud acoustic oscillations (top right). Gravitational structure formation begins in HGD

(bottom left) as fragmentation at superclustermass scales ($\sim 10^{46}$ kg) to form empty protosuperclustervoids, shown as open circles. Because the universe is expanding, structure formation is triggered when viscous forces permit it at density minima to form voids. Voids expand as rarefaction waves limited by the speed of sound, which in the plasma epoch is $c/3^{1/2}$, where c is the speed of light. Fragmentation continues at smaller and smaller mass scales to that of protogalaxies ($\sim 10^{43}$ kg). Weak turbulence develops at the expanding void boundaries. Turbulence determines the morphology of plasma protogalaxies, which fragment along turbulent vortex lines where the rate of strain γ is maximum. The plasma-turbulence Nomura scale 10^{20} m is that of all protogalaxies at their transition to gas¹¹.

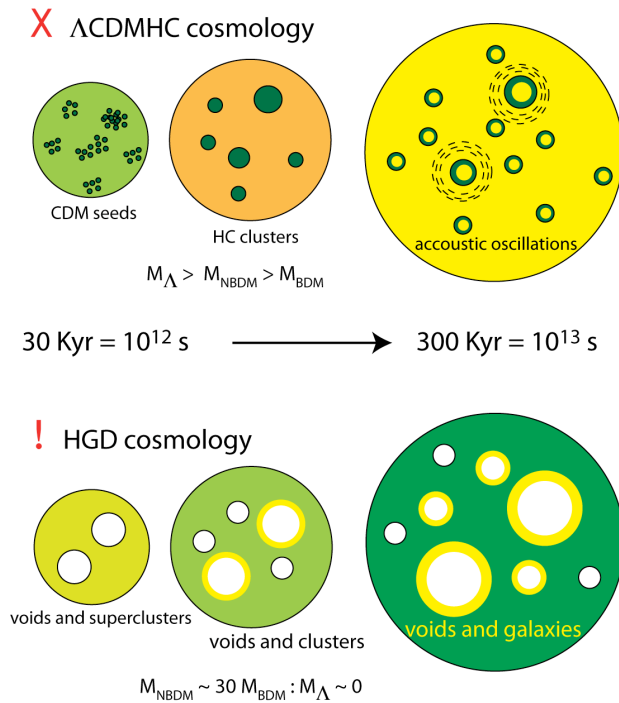


Figure 1. Comparison of plasma epoch behavior of the universe for the incorrect **X** standard Λ CDMHC model (top) versus the correct **!** hydrogravitational dynamics HGD model (bottom). Condensation of the nearly collisionless non-baryonic dark matter to form CDM seeds that cluster (top) is physically impossible. Structure formation occurs by fragmentation (bottom) when the increasing scale of causal connection $L_H = ct$ matches the viscous Schwarz scale L_{SV} . This occurs at $t_0 = 10^{12}$ s (30 Kyr). Proto-galaxies produced at plasma-gas transition¹¹ have Nomura turbulence morphology and length scales reflecting t_0 .

Figure 2 illustrates schematically the two cosmologies in the gas epoch from 300 Kyr to 300 Myr (10^{13} - 10^{16} s), which is often termed the dark ages for Λ CDMHC (top) because this is the time required for the first star and the first planets to appear in this cosmology. The temperature of space has fallen to a few °K that will freeze any gas. The density has decreased by a billion. Any life arising on the handful of planets produced as stars form from gas would likely be blasted out of existence by superstars so powerful they re-ionize all the plasma of the universe as they explode. Extra-terrestrial (and terrestrial) life is virtually impossible by the standard Λ CDMHC model. Life would be extremely rare and confined to local star systems.

For HGD cosmology (Fig. 2 bottom), the 10^{13} - 10^{16} s interval has many stars and warm planets, and is the optimum time period for life to appear and for its first seeds to be widely scattered on cosmic scales. Plasma-protogalaxies form near the end of the plasma epoch by fragmentation along turbulent vortex lines. Gas-protogalaxies fragment into 10^{36} kg Jeans mass clumps of 10^{24} kg planetary-mass clouds that shrink and eventually freeze solid as H-⁴He gas planets (termed primordial-fog-particles PFPs, or micro-brown-dwarfs μ BDs) as they cool.

This is the first gravitational condensation. The planet-clump density $\rho_0 = 4 \times 10^{-17}$ kg m⁻³ is that of the plasma when it first fragmented at 10^{12} s. It is no coincidence that this is the observed density of old globular star clusters OGCs. Clumps of planet-mass clouds are termed proto-globular-star-clusters PGCs. No dark age exists for HGD because the first stars appear in a gravitational free fall time $\sim(\rho_0 G)^{-1/2} = 2 \times 10^{13}$ s or less at temperatures too high for it to be dark anywhere. The process of star formation is binary-planet-mergers within these PGC clumps of primordial-fog-particle PFP planets.

In HGD cosmology all stars form within PGC clumps of planets. The empty volume without planets is termed the Oort cavity, with size $(M/\rho_0)^{1/3}$, where M is the mass of the central star or stars produced by planet merging from a mass density of planets ρ_0 . This is 3×10^{15} m for a solar mass, which closely matches the observed distance to the Oort cloud of long period comets. From HGD, planets continue to fall into the Oort cavity from its inner boundary, eventually overfeeding the central star or stars to the point that they explode as supernovae. Supernovae are the source of carbon, oxygen, nitrogen etc. that are needed to produce life. We see that all the conditions for the first life in the big bang universe are achieved soon after the plasma to gas transition. Because many of the planets and their moon and meteorite fragments will be relatively warm, many domains of liquid water will exist in this early period as primordial soup kitchens. Once the first templates for life appear, they will rapidly be transmitted to other planets and their associated venues so that life can evolve by mutation and evolution as we see it on Earth.

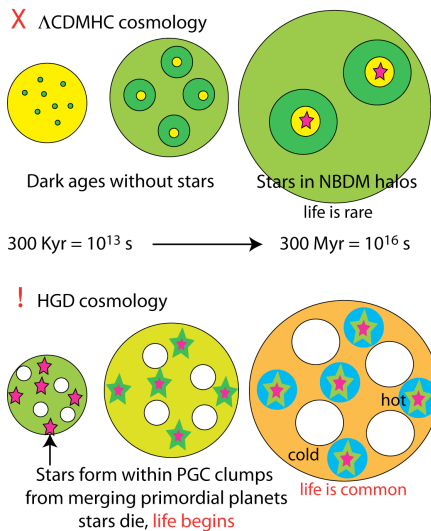


Figure 2. Gas epoch for 300 Kyr to 300 Myr, corresponding to the dark-ages period for Λ CDMHC (top) before the first stars and planets. Astrobiology would be very different in Λ CDMHC because, even if life were to form, it would be confined to a handful of planets formed simultaneously and close to their stellar mother, with no common cosmic ancestors. Life in HGD cosmology (bottom)

begins immediately with excellent cosmical mixing within PGC clumps at all stages, some mixing between clumps and within galaxies, and progressively less mixing at larger scales. The non-baryonic dark matter (probably neutrinos) fragments at its LSD scale after the plasma epoch to form galaxy cluster halos (green bottom center). Hot x-ray halos with small mass surround the clusters (blue bottom right). Radio telescope detection (Rudick et al. 2008) of completely empty supervoids with scales $\sim 10^{25}$ m contradict the Λ CDMHC model (top), which makes small voids that are not empty at its last stage rather than its first.

Figure 3 shows optical band images from the Hubble Space Telescope HST of the Helix planetary nebula PNe, one of the closest PNe to the Earth at a distance of $\sim 6 \times 10^{18}$ m¹². The central white dwarf is constantly fed PFP planets as comets falling in from the Oort cavity boundary, which it converts to carbon. Part of the gas of the comet-planets released to the star is expelled as a plasma beam by the rapidly spinning white dwarf. The plasma beam partially evaporates and photoionizes the nearest surrounding planets to $\sim 10^{13}$ m scales (depending on the mass of the frozen planet) so they are detectable. When the white dwarf mass exceeds the Chandrasekhar limit of 1.44 solar mass (2.2×10^{30} kg) it explodes with large predictable brightness, making it an excellent standard candle for distance estimates.

If the line of sight to the Earth intersects an evaporated planet atmosphere it is slightly dimmed, otherwise it is not dimmed (red circles) and no dark energy is needed to explain the dimming. Thus dark energy Λ is a systematic SNeIa dimming error of dying carbon stars embedded in clumps of primordial planets, not 70% of the density of the present universe as claimed by Λ CDMHC cosmology. A similar systematic error in the age of the universe (Sandage et al. 2006) can also be explained as systematic SNeIa dimming errors due to PFP planet atmospheres (bottom left, red circles). Rather than 16 Gyr, the corrected age is 13.7 Gyr, consistent with the value estimated from cosmic microwave background evidence.

Supernova Ia dimness: BDM planets, NOT dark energy

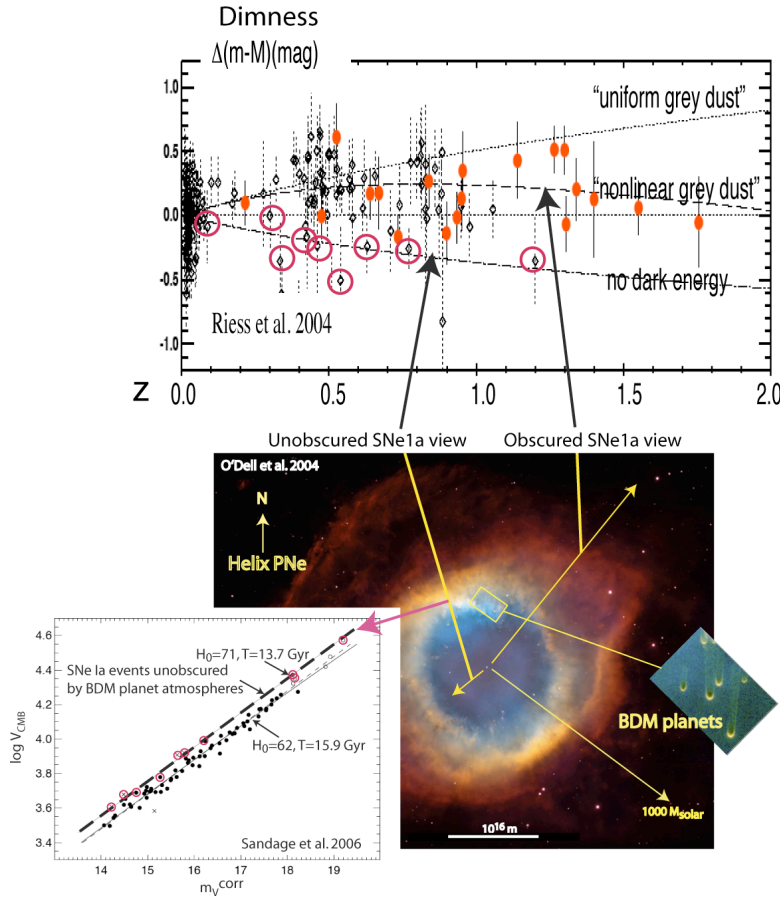


Figure 3. Helix Planetary Nebula (O'Dell et al. 2004) interpreted using HGD cosmology (Gibson 2010, Fig. 8)¹⁰. At the top is supernova Ia (SNeIa) dimness evidence of dark energy (red ovals) not taking effects of dark matter planets in clumps as the source of all stars and the dark matter of galaxies. Unobscured SNeIa lines of sight (red circles) are brighter, suggesting Λ is a systematic dimming error corrected by HGD cosmology. A similar systematic dimming error due to evaporated PFP atmospheres is suggested at bottom right for the age of the universe (Sandage et al. 2006) inferred from the dimmed SNeIa to be 16 Gyr: corrected (red circles) to 13.7 Gyr. A yellow arrow (bottom right) shows the radius of a sphere containing a thousand solar masses of PFP planets.

Most of the evaporated planets of Helix in Fig. 3 are obscured by polycyclic aromatic hydrocarbon PAH dust. Only 5000 optical planets can be seen. Infrared space telescopes such as Spitzer reveal 40,000 or more, as well as planet protocomets falling into the central star.

4. EVIDENCE OF PRIMORDIAL PLANETS FROM INFRARED TELESCOPES

Figure 4 shows the Helix PNe in both optical (bottom) and infrared (top) frequencies (Matsuura et al. 2009)¹³. Numerous planets and all of the planet-protocomets are quite invisible in the HST optical frequencies.

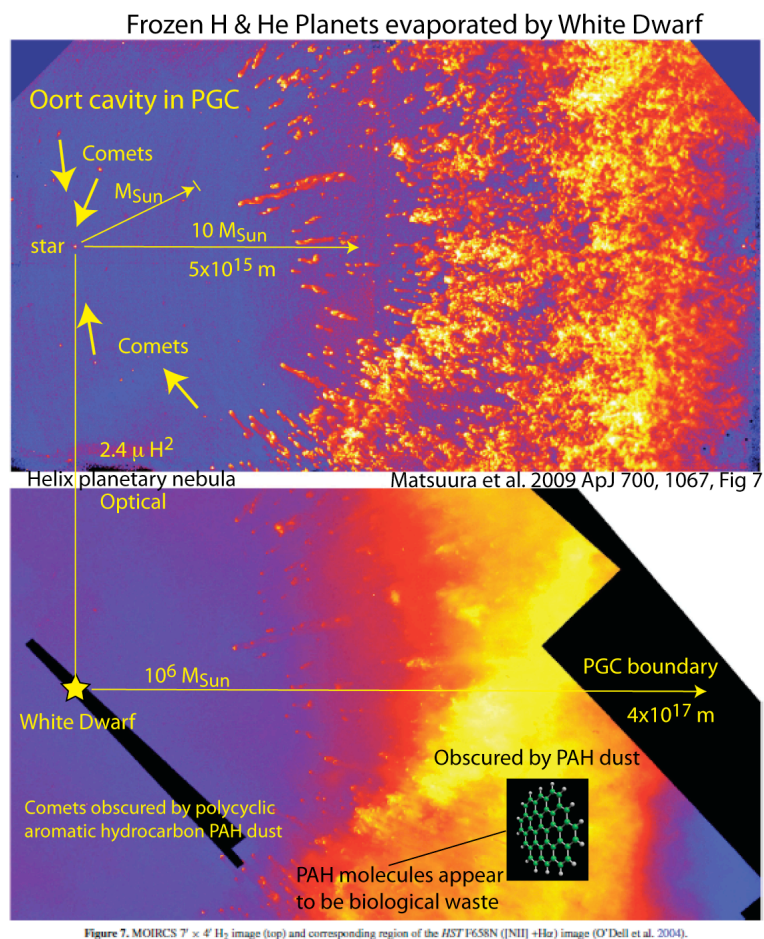


Figure 4. Helix PNe reveals partially evaporated dark matter planets (top) at the hydrogen molecule H² wavelength 2.4 μ (Matsuura et al. 2009)¹³ that are obscured to an extent that increases with radius from the central white dwarf star, suggesting PAH dust has been evaporated from the planets as well as their originally frozen H-He gas. A typical PAH molecule is shown (bottom right), which has the structure of carbohydrate oils used as food by terrestrial organisms.

Note from Fig. 4 that planets at the Oort cavity boundary are sorted according to their amounts of biological activity by the radiation pressure, which increases with PAH content because the heat transfer increases with the size of the atmosphere.

Figure 5 is a similar Helix PNe comparison (Meaburn & Boumis 2010)¹⁴, showing clumps (globulettes)¹⁵ of PFPs revealed in the infrared that are invisible in the optical. Clumping is easy to understand from HGD since the plasma beam radiating from the white dwarf magnetic pole is responsible for the partial evaporation and photoionization of the dark matter frozen gas planets it intersects. A clockwise helical track of evaporation can be traced in Helix, which accounts for its name. The large atmospheres of the irradiated planets causes frictional forces between planets whose atmospheres overlap that may cause them to clump and in some cases merge.

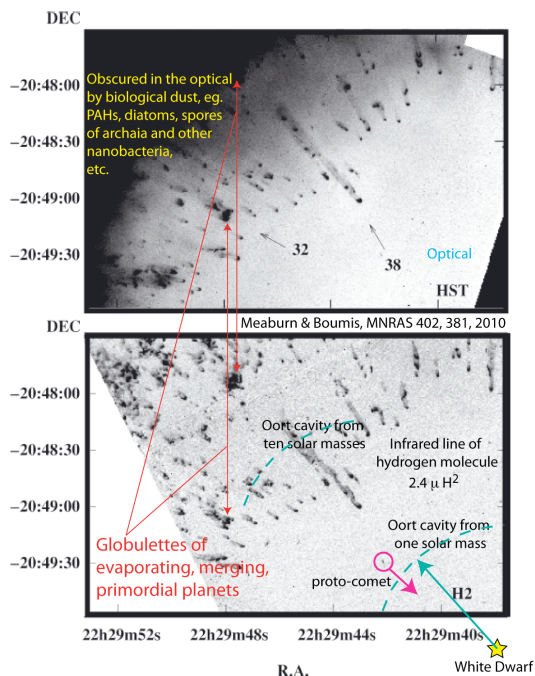


Figure 5. Helix PNe at optical frequencies (top) compared to the infrared molecular hydrogen band (bottom). Globulettes¹⁵ of evaporating, merging primordial planets are inferred from vertical red arrows left of center connecting optical and infrared objects.

Earth is constantly bombarded by meteors. Carbonaceous meteorites such as Murchison contain ample evidence of ancient extra-terrestrial life. As shown in Figure 5, the morphology of fossils contained is that of organisms that were once alive, but most species are unknown or different from those on this planet. The complexity of the organic compounds detected in a sample of the 100 kg object is estimated to exceed a million¹⁶, a significantly larger chemodiversity of its source compared to that of Earth. Evidence suggests Murchison is older than the Earth. Images of cyanobacteria from Murchison and Orgueil meteorites are available at Richard Hoover's website, along with numerous references, <http://www.panspermia.org/hover4.htm>.

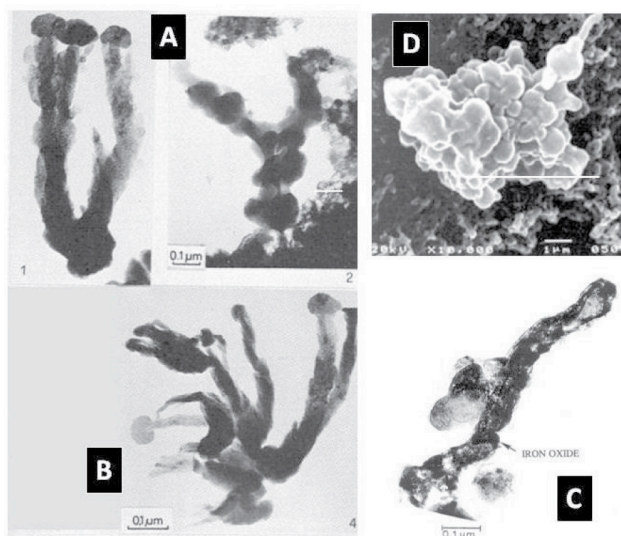


Figure 6. Microbial fossils from comets. Images A, B are bacterial microfossils in the Murchison meteorite (courtesy Hans Pflug), C is a bacterial fossil within a Brownlee particle and D is a clump of cocci and a bacillus from dust collected using a cryoprobe from 41km in the atmosphere. References and credits are given in Wickramasinghe et al., 2010¹⁷.

Figure 7 shows a much more mysterious organism, taken to be extraterrestrial and potentially an important link to the origin of life. It is the Red Rain material that fell on Kerala, India, in 2001, soon after a sonic boom announced the arrival of a meteor¹⁸.

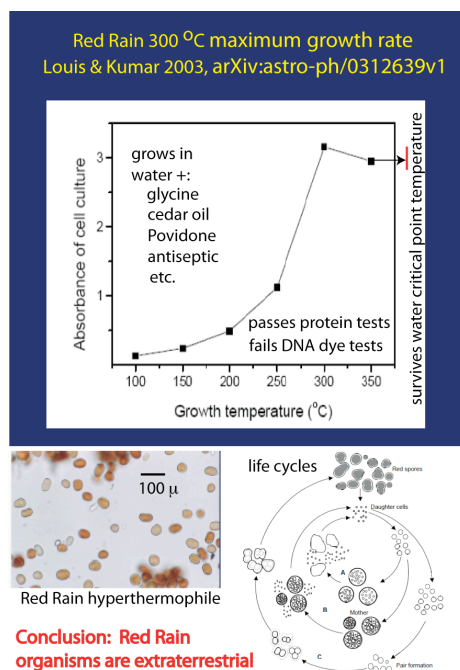


Figure 7. Louis and Kumar study¹⁸ of Kerala Red Rain organisms. Maximum growth rates occur at a record 300°C, far above survival temperatures of known terrestrial hyperthermophiles. Survival temperatures exceed the water critical point 374 °C (red line), which is suggested¹⁹ as optimum for the formation of life chemicals.

The Louis and Kumar (2003)¹⁸ study supports their conclusion that Red Rain organisms are living extraterrestrial hyperthermophiles, delivered to the Earth by cometary panspermia. Complex life cycles (Fig. 7 bottom right) and protein tests suggest DNA regulation. However, the organism fails L-amino acid based DNA dye tests, suggesting Red Rain organisms may be representative of an R-amino acid “shadow biosphere”. The handedness of sugars and amino acids are chemically arbitrary, so DNA life should appear in either R or D forms. Figure 8 shows results from other laboratories²⁰ that generally replicate the Louis and Kumar results.

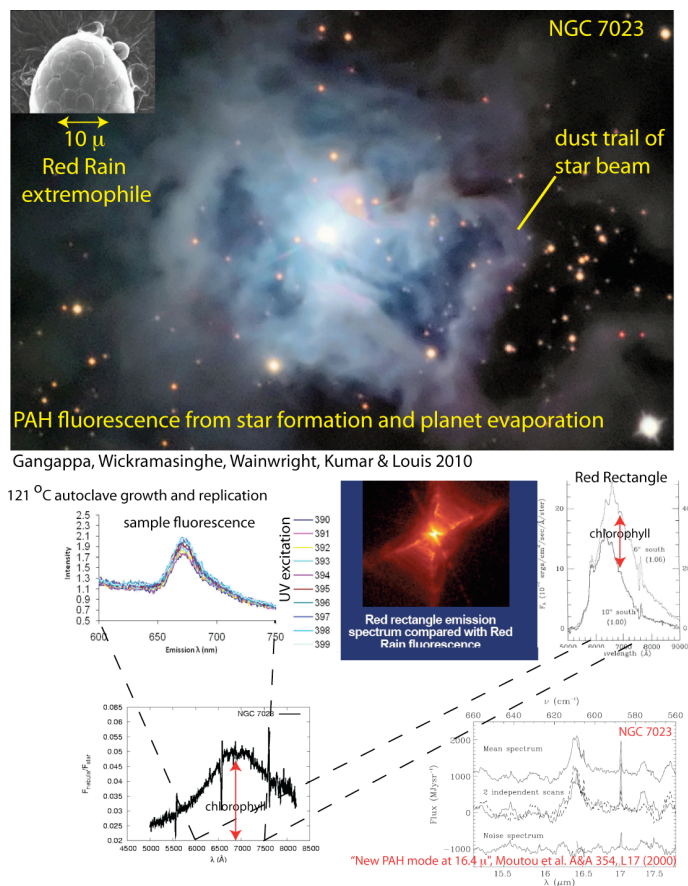


Figure 8. Polycyclic aromatic hydrocarbon PAH evidence of Red Rain organisms in the reflection nebula NGC 7023, the Red Rectangle, and in laboratory replications of the Louis growth results to 121 °C. A new PAH mode in the characteristic Red Rain frequency band is reported by Moutou et al. (2000)²¹. Chlorophyll lines appear in both 7023 and the Red Rectangle.

5. DISCUSSION

Table 1 and Figures 1 and 2 review the large differences between cosmologies with (HGD) and without (ΛCDMHC) fluid mechanics. HGD cosmology shows life should be primordial, widely distributed and chemically homogeneous. ΛCDMHC cosmology rules out life without miracles. Figures 3, 4 and 5 of the Helix planetary nebula support the HGD conclusion that the dark matter of galaxies is primordial planets in protoglobular star cluster PGC clumps of a trillion. Figure 6 from the Murchison carbonaceous meteorite shows some of the first strong evidence of cometary panspermia on cosmic scales of extraterrestrial microfossils, as championed for many decades by N. C. Wickramasinghe and F. Hoyle.

Figures 7 and 8 describe Red Rain evidence that extraterrestrial life exists with resistance to temperatures and chemicals terrestrial life cannot tolerate, at temperatures exceeding the critical point of water. The critical conditions of water are to astrobiology as the Planck conditions are to the big bang; that is, ideal. Chirality of DNA suggests a binary biosphere on PGC scales.

Figure 9 suggests a likely scenario for first life to occur in the hot gas primordial planets of HGD cosmology. The universe cools as it expands and the primordial planets will also cool by radiative

heat transfer to space. Stars and supernovae at protogalaxy cores supply stardust chemicals of life to primordial planet clouds as they cool toward the critical temperature of water 674 K.

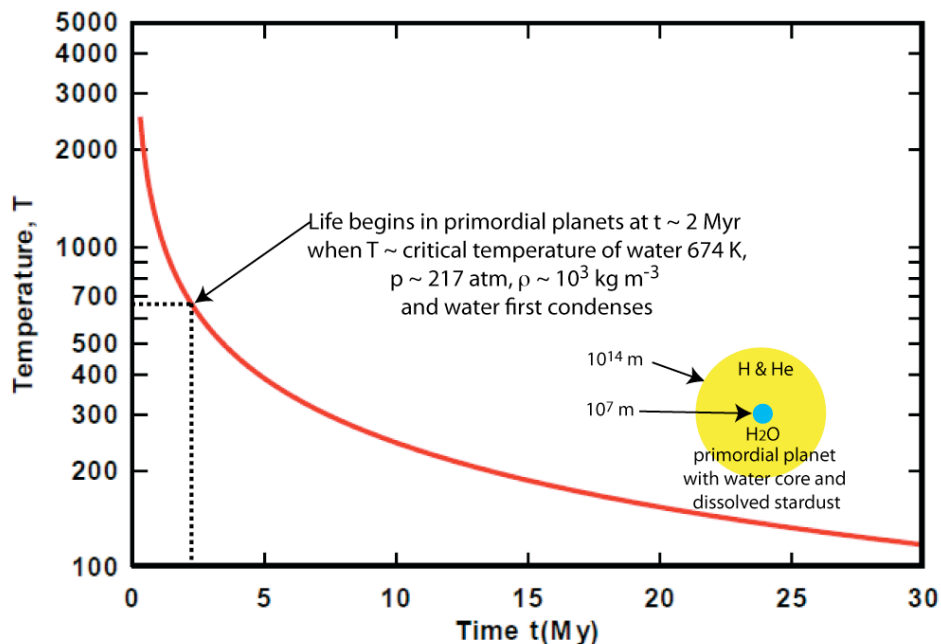


Figure 9. The optimum time and conditions for first life to form in primordial planets is when water first condenses in the presence of the necessary stardust chemicals C, O, N, P etc. following the first stars and supernovae. This occurs at approximately 2 million years after the big bang event²². The density of the universe at that time was a million times larger than it is at present.

In this highly reducing atmosphere, iron and nickel from SNe II events collect at planet cores and melt from mergers. Stratified layers of liquids and gases form above the core, including water. From Fig. 9, critical temperature water should start to condense and form life chemicals, and life, at the core of the planets (with dissolved life chemicals C, O, N, P, Si, etc.) at about 2 million years.

Figure 10 shows the present scenario for the formation of life in the first oceans of the communicating primordial planets. The oceans condense at the critical temperature of water 647 K. Critical temperature water is apolar because of the existence of dimers and trimers¹⁹. The high pressure hydrogen produces mostly apolar molecules like carbon monoxide, methane, and hydrocyanic acid that will readily dissolve and rapidly form more complex organic molecules at such high temperatures.

The Biological Big Bang

Scenario for the formation of prebiotic chemicals and first life in a PFP gas planet at 2-8 Myr. To accomplish the transition from basic organic chemicals to self-replicating molecules like RNA in the age of the universe implies an early start and numerous high temperature oceans connected on cosmic scales by cometary panspermia. PFP oceans were likely colored blue by the reaction of hydrogen cyanide with iron to form the dye Iron(II,III) hexacyanoferrate(II,III) called Prussian Blue.

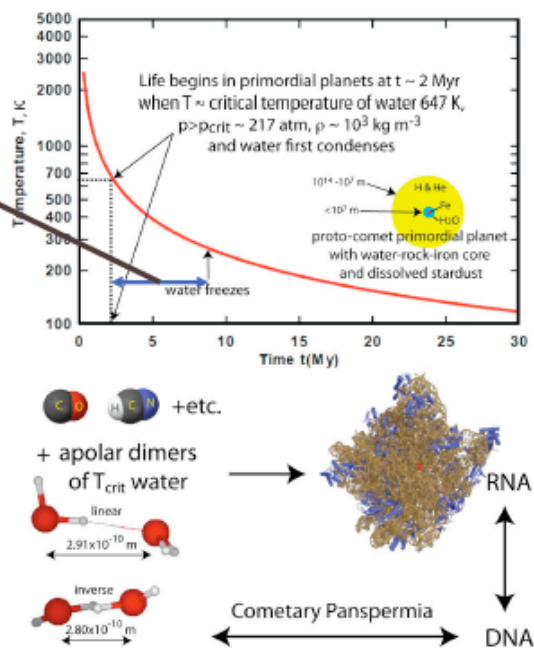


Figure 10. Organic chemistry should evolve rapidly in the first hot water oceans²³. Self replicating autocatalytic reactions such as RNA have an excellent opportunity to optimize their efficiency in the $\sim 10^{80}$ hot water oceans produced by the cosmological big bang because all stars are formed by mergers of the primordial planets²⁴.

Figure 11 shows further evidence of cometary panspermia in the Helix Planetary Nebula from the infrared sensitive satellite Spitzer. In the optical frequency band, no comets can be seen within the Oort cavity, and these are required to explain why the central white dwarf continues to grow until it reaches the Chandrasekhar limit mass of 1.44 solar masses of carbon and explodes to form a supernova 1a. In the infrared, such comets are clearly seen.

Spitzer infrared view of nearby Helix planetary nebula

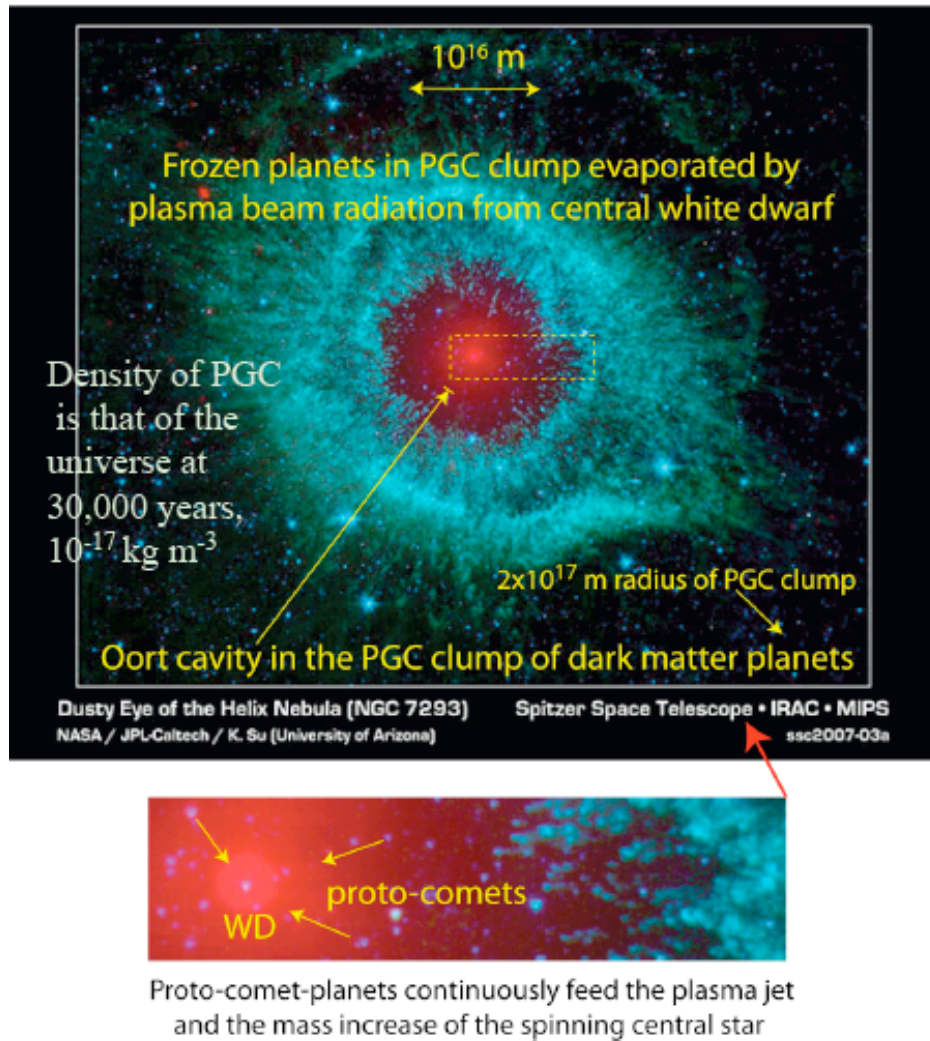


Figure 11. Helix planetary nebula in the infrared from the Spitzer Space Telescope. The central region devoid of planets is termed the Oort cavity. The size of the cavity reflects the mass of one or two stars formed by planet mergers within the PGC clump of planets assuming the density is that of the universe at the time 10¹² seconds when structure first began to form.

Figure 12 is one of the first results of the recently commissioned Herschel Space Observatory, showing unexpected jets of water emerging from young stars in star forming regions of the Milky Way Galaxy. Both the Planck satellite and the Herschel Space Observatory were placed at the second Lagrange point of the Earth-Sun system in May 2009. The water jets are consistent with the HGD cosmology scenario where stars form from merging primordial planets, some of which have frozen water oceans, and unexpected by Λ CDMHG where stars are supposed to form from dry interstellar gas and dust.

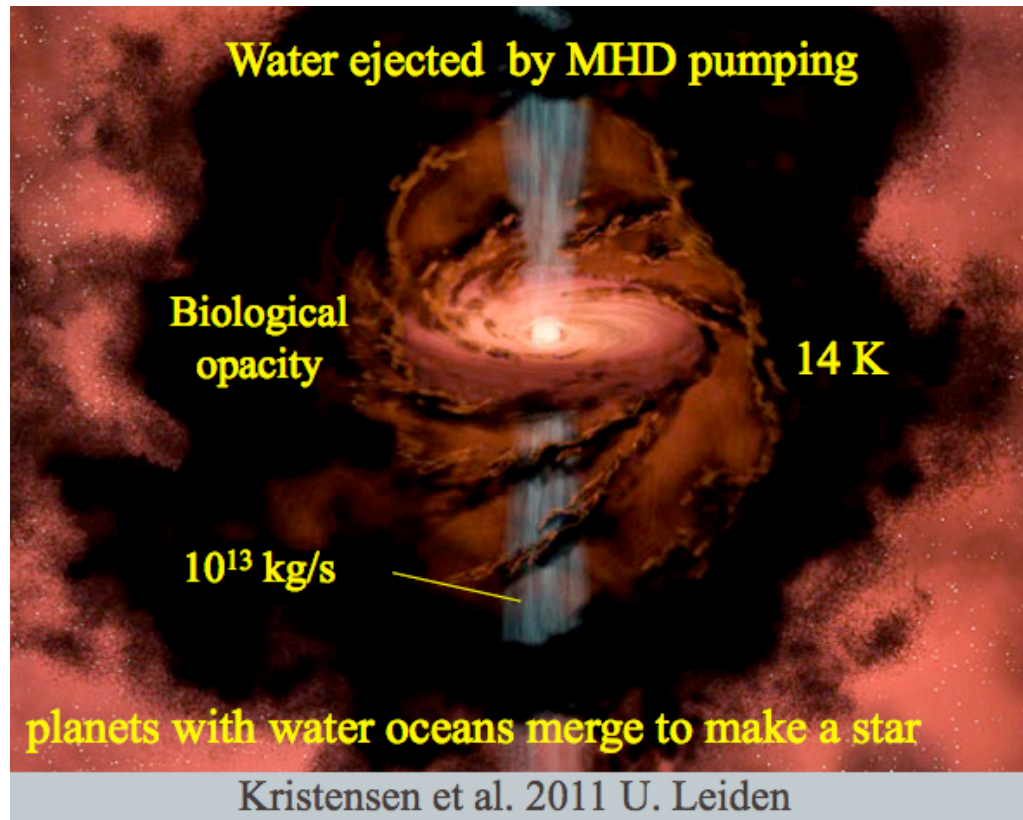


Figure 12. Water jets of 10^{13} kg s⁻¹ are observed in the first Herschel Space Observatory results. Far infrared images of the jets would normally be obscured by PAH dust in the optical. The “dust” appears to be frozen hydrogen planets from their temperatures of 14 K matching the triple point temperature of hydrogen.

Lars Kristensen of Leiden University compares water flow rates from young stars in terms of flow rates of the Amazon river in a recent National Geographic article.

Figure 13 is an HGD modification of the NASA, WMAP 2006, time line for the Concordance Cosmology CC scenario for the evolution of the universe. Both cosmologies assume a big bang beginning at time zero. On the right, dark energy Λ drives an accelerating expansion of the universe according to CC cosmology, but a big crunch is expected for HGD since entropy is produced by the turbulent big bang mechanism.

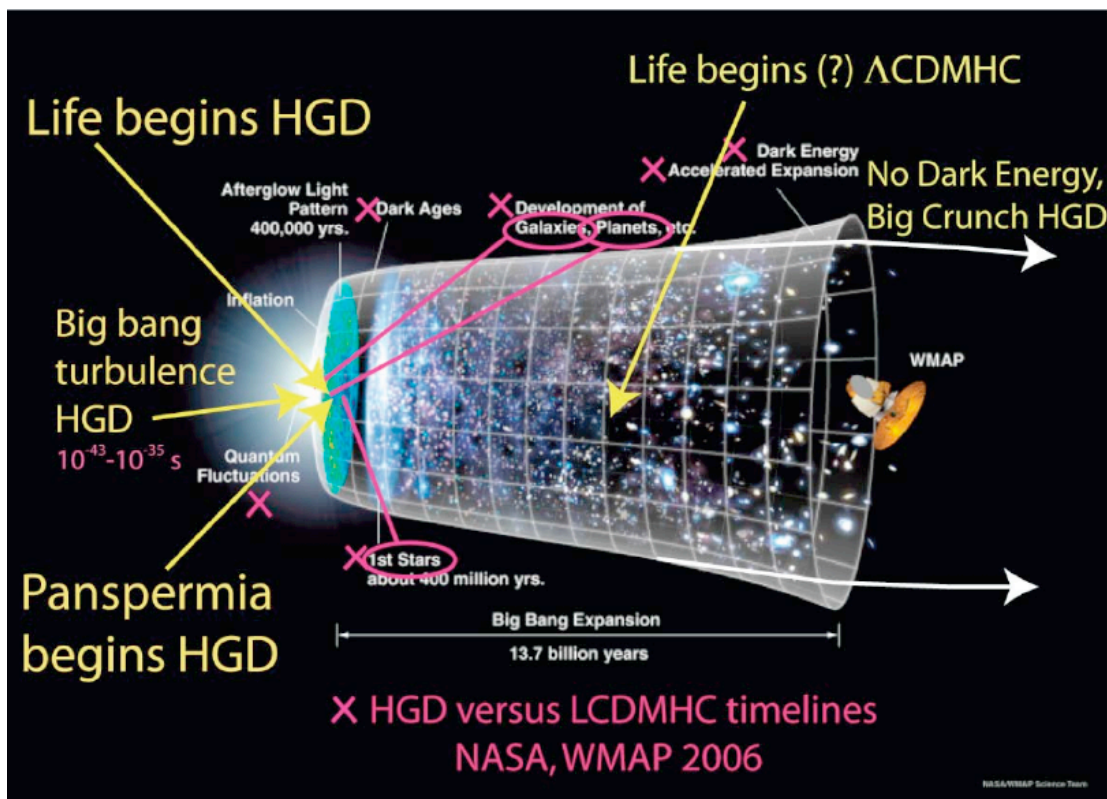
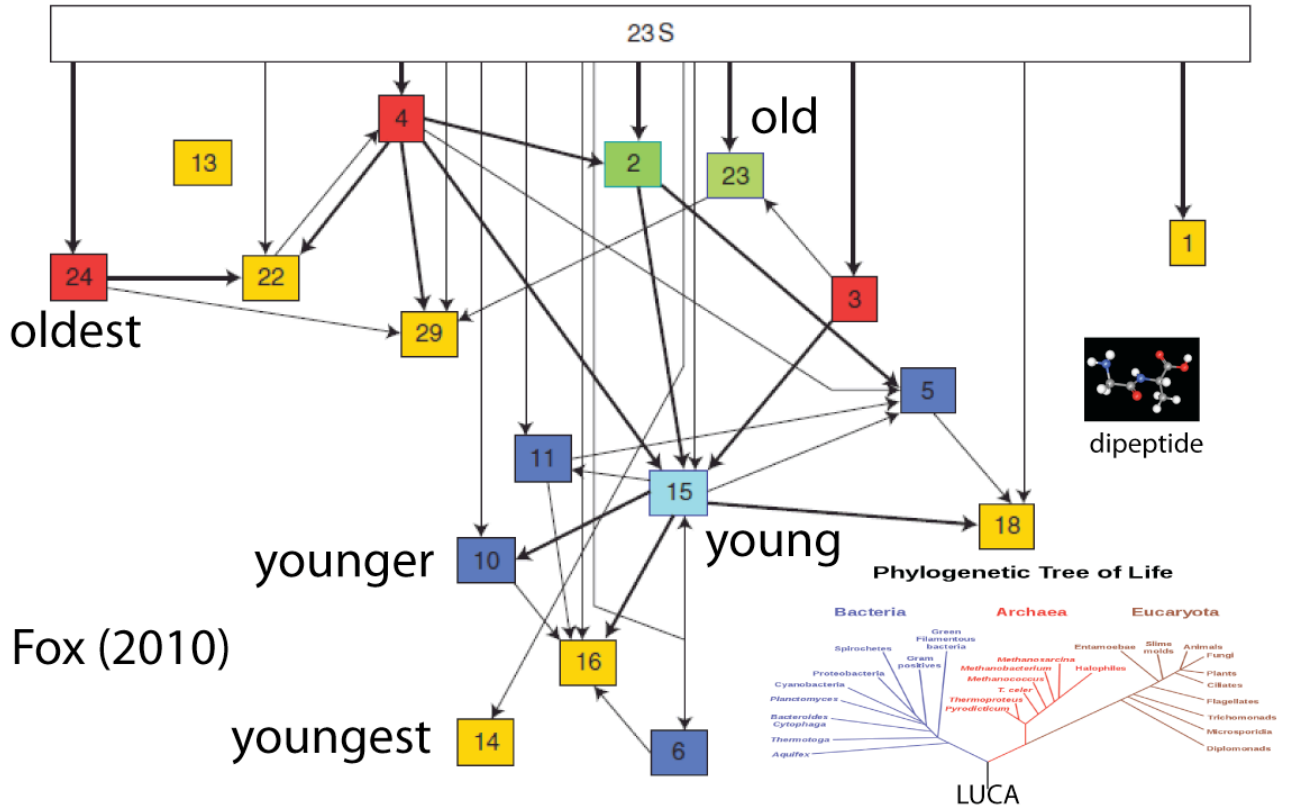


Figure 13. Comparison of time lines for HGD cosmology and Λ CDMHC cosmology. Life formation is virtually impossible in the Λ CDMHC cosmology because stars do not form for 400 million years, with only a handful of planets per star. Life formation in HGD cosmology is early and inevitable.

Figure 14 shows evidence of the relative ages of the RNA subunits in the rRNA 23S complex molecule described by George E. Fox et al. in paper 8152-32 of this meeting²⁵. Using modern instrumentation it is possible to identify relative ages of different components of the molecule and its many subunits, looking for the Last Universal Common Ancestor (LUCA) in the phylogenetic tree of life.

Assembly of RNA subunit 50S by rRNA 23S



Relative ages of RNA subunits: looking for the Last Universal Common Ancestor LUCA

Figure 14. Assembly of RNA subunit 50S by the ribosome complex rRNA 23S. The youngest part is at the center, called the peptidyl transferase center PTC. The PTC appears to be the oldest part of the system, and has no proteins (polypeptides) of its own.

Figure 15 is from one of Loren D. Williams papers²⁶ mentioned in his contribution 8152-33 of the SPIE 2011 Astrobiology symposium in San Diego, CA (an earlier version of the present paper was presented at this symposium). Ribosomes are discussed as “ancient molecular fossils”.

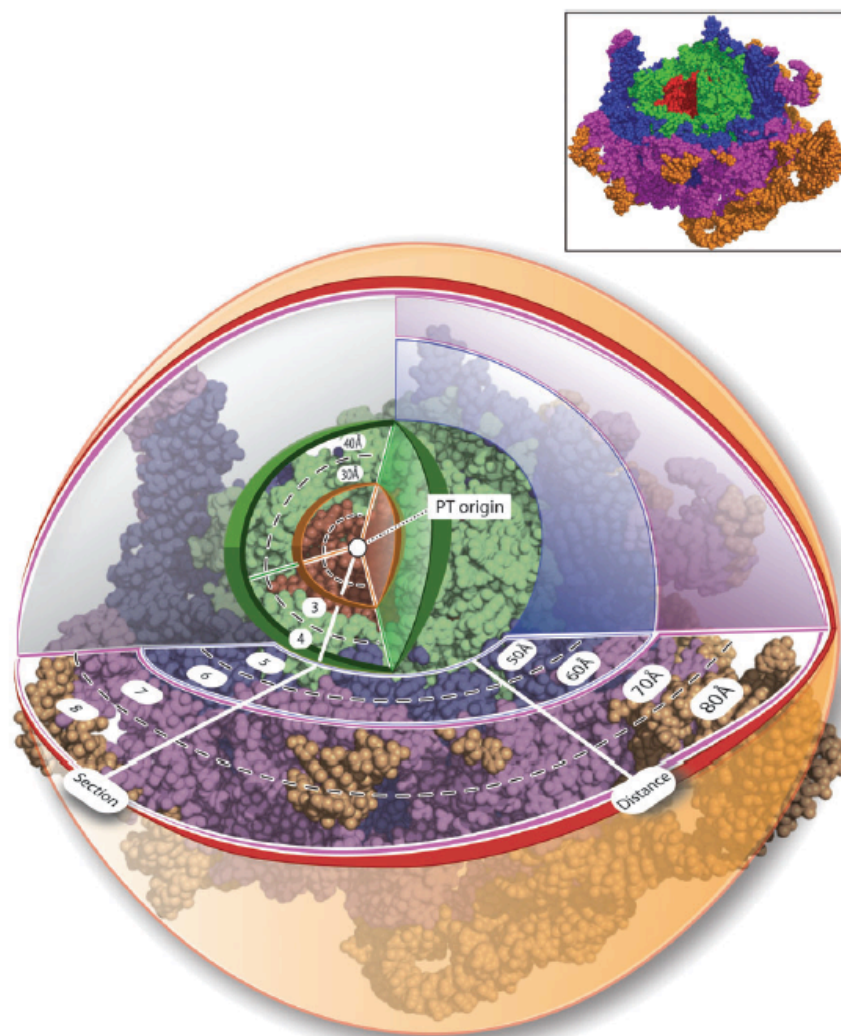


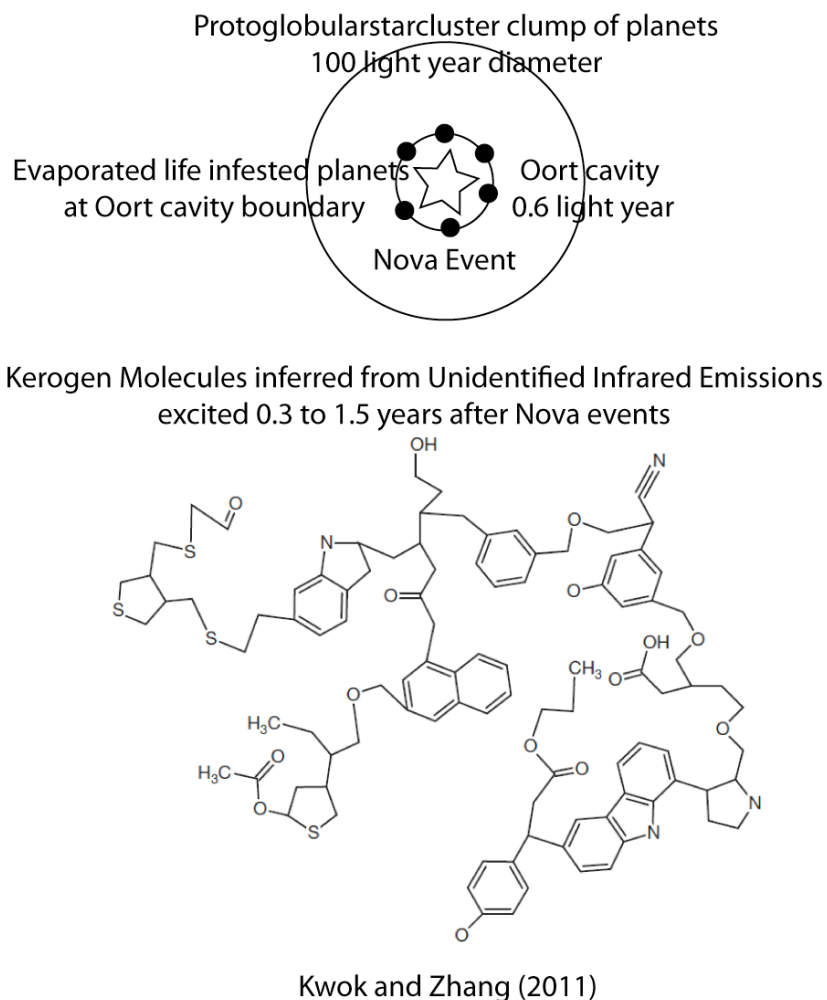
Figure 15. The rRNA 23S ribosome molecule has an onion like structure, with the oldest part of the onion at the center.

The PT-origin in Fig. 15 is the same as the PTC peptidyl transferase center of Fox et al. At this time only relative ages of the rDNA 23S components are proposed. From HGD cosmology, the absolute age of RNA and DNA life is most likely primordial. Nothing from our experience of evolution on Earth rules out primordial intelligent life.

Recent studies of complex chemicals inferred from infrared spectral measurements of interstellar dust have been presented by Kwok and Zhang²⁷, as shown in Figure 16. These aromatic-aliphatic nanoparticles are much too complex to be the result of non-organic interstellar chemistry. The first proposal of organic polymer grains in the interstellar medium was made by one of the present authors NCW, who suggested in 1974 that formaldehyde polymers might explain the 8-14 μ m emission spectrum of dust in the Trapezium nebula.

As shown in Fig. 16, the unidentified infrared emissions (UIE) from Novae appear at a particular time interval near 0.3 years following the event that supports our suggestion that the UIE events are due to the evaporation of life-infested planets close to the star. This is the time it takes light to cover

the expected distance to the Oort cavity boundary in a protoglobularstarcluster (PGC) clump of primordial planets (see Figs. 3-5).



Condensed organics from star or life-infested planets?

Figure 16. Spitzer space telescope infrared spectra have been used by Kwok and Zhang to infer a complex organic chemical structure of the interstellar dust similar to kerogen (figure from Gibson, C. H., "Does Cometary Panspermia Falsify Dark Energy?", *Journal of Cosmology*, 16, 7000-7003, 2011).

It seems quite unlikely that a complex organic molecule like that shown in Fig. 16 would be produced in cold interstellar space by inorganic chemistry, as described by Herbst^{29, 30}. Organic chemistry in the oceans of the dark matter planets is much more likely, taking advantage of the experience developed in nearly 14 billion years.

Astronomical dust models are hampered by the star formation models used by concordance cosmology, which are quite false as we have seen. Stars are not formed by gas and dust condensation, they are formed by the accretion of primordial gas planets within protoglobularstarcluster clumps of planets. The dust is produced by life on the planets that very

efficiently processes all the carbon the planet collects from stars and their novae and supernovae. The dust is thus formed in place. Huge amounts of materials detected after supernovae events are evaporated planets that surrounded the stars and produced the stars, which never get much larger than the sun in terms of their mass. There were no massive stars to produce these materials, and there were no superwinds of these materials to produce massive supernovae remnants. For a careful review of the standard model, see Henning and Mutsche³¹.

6. CONCLUSIONS

Theory and observational evidence show that the standard dark-energy cold-dark-matter hierarchical-clustering Λ CDMHC model for cosmology must be replaced by hydrogravitational dynamics cosmology HGD. An important result of HGD cosmology is its prediction that the dark matter of galaxies is Primordial-Fog-Particle planets PFPs in Proto-Globular-Cluster clumps PGCs. All stars form in these PGC clumps as PFPs merge, contrary to the standard model of star formation³¹. The optimum time for first life and the spreading of the seeds of life is very early while the planets are warm and the universe is dense.

We suggest²⁴ the time of first life was at ~ 2 Myr when the universe cooled sufficiently for water to condense, with stardust fertilizer C, N, O, P etc., at the core of the H-He⁴ primordial planet clouds, Fig. 9. The critical temperature of water 674 K approximately matches the breakdown temperature of amino acids needed for DNA, and permits the high speed chemical kinetics necessary for living organisms and their complex chemicals to rapidly develop and evolve the highly efficient DNA mechanisms we see on Earth. Chlorophyll catalysts for converting carbon to food can resist such high temperatures, and are detected in interstellar dust spectra (see Fig. 8). A shadow biosphere with reversed DNA chirality is suggested by studies of the Red Rain organism, whose DNA is undetected by standard methods but whose life cycles and astrophysical signatures imply DNA capabilities. Physical and biological evidence in Figs. 10-16 support a biological big bang description of primordial life formation.

Part of the astrobiological processes that produce life in primordial planets is the distribution of the templates or seeds of life by the plasma jets of the stars the planets produce, as well as the jets from active galactic nuclei that devour millions of stars and eject to other galaxies trillions of life infested planets and planet clumps. The biosphere and shadow biosphere therefore extend to all material produced by the big bang, about 10^{80} planets. Biological processes are extremely efficient at converting the carbon of planets to organic chemicals and their fossils, as we see on Earth. With high probability, life did not begin on Earth, or on any of the 10^{18} planets of the Galaxy, but was more likely brought to Earth and the Milky Way by cometary panspermia. Biology and medicine are thus subsets of astrobiology on cosmic scales yet to be determined by future studies.

REFERENCES

1. Gibson, C.H., "Turbulence in the ocean, atmosphere, galaxy and universe," *Appl. Mech. Rev.* 49, no. 5, 299–315, 1996.
2. Schild, R., "Microlensing variability of the gravitationally lensed quasar Q0957+561 A,B," *ApJ* 464, 125, 1996.
3. Hoyle, F. and Wickramasinghe, N.C., *Nature* 270, 323, 1977.
4. Hoyle, F. and Wickramasinghe, N.C., "Proofs that Life is Cosmic," *Mem. Inst. Fund. Studies Sri Lanka* 1 (www.panspermia.org/proofslifeiscosmic.pdf), 1982.

5. Hoyle, F. and Wickramasinghe, N.C. *Astronomical Origins of Life: Steps towards Panspermia*, Kluwer Academic Press, 2000.
6. Gibson, C. H., Schild, R. E. & Wickramasinghe, N. C., “The origin of life in primordial planets,” *International Journal of Astrobiology* 10 (2) : 83–98 doi:10.1017/ S1473550410000352, [arXiv:1004.0504](https://arxiv.org/abs/1004.0504), 2011.
7. Gibson, C.H., “Turbulent mixing, diffusion and gravity in the formation of cosmological structures: The fluid mechanics of dark matter,” *J. Fluids Eng.* **122**, 830–835, 2000.
8. Gibson, C. H., *New Cosmology: cosmology modified by modern fluid mechanics*, Amazon.com, Inc., ISBN 978-1449507657, 2009a.
9. Gibson, C. H., *New Cosmology II: cosmology modified by modern fluid mechanics*, Amazon.com, Inc., ISBN 978-1449523305, 2009b.
10. Gibson, C. H., “Turbulence and turbulent mixing in natural fluids,” *Physica Scripta, Turbulent Mixing and Beyond 2009*, T142 (2010) 014030 doi: 10.1088 /0031-8949 /2010 /T142 /0140302010, arXiv:1005.2772v4, 2010.
11. Gibson, C. H., “Cold Dark Matter Cosmology Conflicts with Fluid Mechanics and Observations,” *J. Appl. Fluid Mech.* **1(2)**, 1-8, 2008, arXiv:astro-ph/0606073, 2008.
12. Gibson, C.H. & Schild, R.E., “Interpretation of the Helix Planetary Nebula using Hydro-Gravitational-Dynamics: Planets and Dark Energy,” 2007, arXiv:astro-ph/0701474, 2007.
13. Matsuura M. et al., “A ‘Firework’ of H₂ knots in the planetary nebula NGC 7393 (The Helix Nebula),” *ApJ* **700**, 1067-1077, 2009.
14. Meaburn, J. & Boumis, P., “Flows along cometary tails in the Helix planetary nebula NGC 7293,” *Mon. Not. R. Astron. Soc.* 402, 381–385, 2010, doi:10.1111/j.1365-2966.2009.15883.x
15. Gahm, G. et al., “Globulets as seeds of brown dwarfs and free-floating planetary-mass objects,” *AJ* **133**, 1795-1809, 2007.
16. Schmitt-Kopplin, P. et al., “High molecular diversity of extraterrestrial organic matter in Murchison meteorite revealed 40 years after its fall,” *PNAS* **107(7)**, 2763–2768, 2010, [doi:10.1073/pnas.0912157107](https://doi.org/10.1073/pnas.0912157107), 2010.
17. Wickramasinghe, C., “The astrobiological case for our cosmic ancestry”, *Int. J. Astrobiol.*, Volume **9** , Issue 02, 119-129, 2010, doi:10.1017/S14735504099990413, 2010.
18. Louis, G. & Kumar, S., “New biology of red rain extremophiles prove cometary panspermia,” <http://arxiv.org/abs/astro-ph/0312639>, 2003.
19. Bassez, M. P., “Is high-pressure water the cradle of life?,” *J. Phys.: Condens. Matter* **15**, L353–L361, 2003.
20. Gangappa, R, Wickramasinghe, N. C., Kumar, S. & Louis, G., “Growth and replication of red rain cells at 121 °C and their red fluorescence”, *SPIE 7819 proceedings*, 2010.
21. Moutou et al., “New PAH mode at 16.4 m”, *A&A* **354**, L17, 2000.
22. Wickramasinghe, N. C., Wallis, J., Gibson, C. H., and Schild, R. E., “Evolution of primordial planets in relation to the cosmological origin of life,” *SPIE 7819 proceedings*, 2010.
23. Gibson, Carl H., N. Chandra Wickramasinghe and Rudolph E. Schild, “Primordial Planets, Comets and Moons Foster Life in the Cosmos”, *SPIE Conference 7819 Instruments, Methods and Missions for Astrobiology XIII Proceedings*, R. B. Hoover, Editor, 2010.
24. Gibson, Carl H., N. Chandra Wickramasinghe, Rudolph E. Schild, “First Life in Primordial-Planet Oceans: The Biological Big Bang”, *Journal of Cosmology*, 11, 3490-3499, 2010.
25. Fox, George E., “Origin and Evolution of the Ribosome”, *Cold Spring Harb Perspect Biol* 2010;2:a003483, 2010.

26. Hsiao, Chiaolong, Srividya Mohan, Benson K. Kalahar, and Loren Dean Williams, "Peeling the Onion: Ribosomes Are Ancient Molecular Fossils", *Mol. Biol. Evol.* 26(11):2415–2425. 2009, doi:10.1093/molbev/msp163, 2009.
27. Kwok, S. and Zhang, Y., "Mixed aromatic-aliphatic organic nanoparticles as carriers of unidentified infrared emission features", *Nature*, 470, 80-83, 2011.
28. Wickramasinghe, N.C., "Formaldehyde polymers in interstellar space", *Nature*, 252, 462-463, 1974.
29. Herbst, Eric, "The chemistry of interstellar space", *Chem. Soc. Rev.*, 30, 168–176, 2001.
30. Herbst, Eric, "Chemistry in the ISM: the ALMA (r)evolution: The cloudy crystal ball of one astrochemist", *Astrophys Space Sci* 313: 129–134, 2008.
31. Henning, T., H. Mutschke, "Optical properties of cosmic dust analogs: A review", arXiv:1004.5234v1 [astro-ph.IM] 29 Apr 2010.